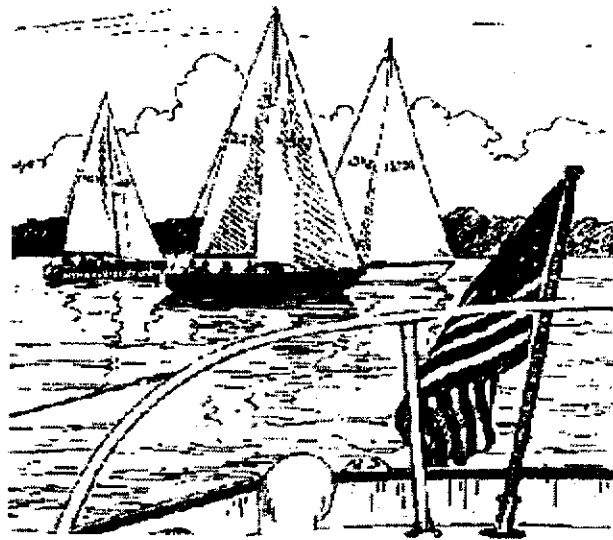


**West Bay
Yacht Club**



**2009
Racing Program**

A special thanks to the 2008 Race Committee:

Race Chair: Grant Brandon

Outside Circle: Rik Blanchard, John Budzinski


Inside Circle: Raleigh Jenkins, Esther Brandon, Grant Brandon

Kitchen Crew: Jo-Ann Grima, Phyllis Geiser, Jennifer Brandon

Weekend races: Jack Mann, Diane Narcisi, Paul Finstein

Race Book: Scott Tagen

NEW ENGLAND YACHT RIGGING
1 Water Street
East Greenwich, RI
401/884-1112

**DOYLE** Todd Johnston
1 Division St.
E. Greenwich, RI
02818
T (401) 884-4227



Welcome to another season of racing with West Bay Yacht Club. Whether you have raced with us for many years, or are new to the competition, we're glad to have you aboard.

In 1975, West Bay Yacht Club and its racing program were founded on the belief that boating and racing should be fun and family oriented. Over the years the racing program has grown substantially in both size and level of competition, and we continue to take pride in never losing sight of the original goal to have fun along the way.

As in past years, we will feature a full slate of Monday night racing throughout the summer and the fall. The Summer Series begins on June 1nd and runs through the 24th of August. The Fall Series begins on Monday August 31st then jumps to Monday September 14th and Monday September 21st with the last race to be held on Wednesday September 30th. Cruising canvas and spinnaker classes will be both offered in the above programs, as well as, long distance races on the weekends. In addition to all of the above the F3 Series has been rejuvenated in conjunction with EGYC and AHYC for June 19th, July 17th and August 21st.

Our expanded program of long distance racing begins on June 20th with the Rainone Memorial Solo/Twin followed by the Newport Storm Race on July 11th, the Lady Skippers' Race on July 25th, the Norton Memorial Race on August 15th and, last but not least, the Fantastic Plastic Pursuit Race on August 22nd. On October 17th we'll cap off the racing season with the Pumpkin Patch Race all starting at 12 Noon at or near C3 [Warwick Neck].

Class winners from the summer series will compete in NBYA's Champion-of-Champions Regatta on the October 4th and in the Swanson and Bay Challenge Cup on September 20th.

Lastly, if you've raced with us before, welcome back. If this is your first time participating in our program, welcome aboard. We wish everyone a safe, successful and enjoyable 2009 sailing season.

Sail Fast,
Grant Brandon

RACING INSTRUCTIONS

- I. **RULES:** The rules to be followed in all events sponsored by West Bay Yacht Club will be the current Racing Rules of Sailing as published by U.S. Sailing, except as modified by these rules or as specified in the Notice of Race for any particular event. Each vessel shall carry a copy of the current Racing Rules on board while competing.
- II. **SAFETY EQUIPMENT:** All competing vessels shall carry such equipment as is required in accordance with USCG regulations applicable to their vessel.
- III. **REGISTRATION:** The WBYC Race Committee must have completed entry forms and (when required) a valid PHRF certificate at least 24 hours prior to the race, unless otherwise specified. All entrants must be paid in full prior to the start or they will be ruled DNS.
- IV. **CHANGES:** The Race Committee must be notified prior to any race of any changes in registration or rating. After the second week of a series, the Race Committee may refuse to adjust scoring based on a change of rating.
- V. **RATING:** All competing vessels must have a valid, current year PHRF-NB rating certificate on file, and shall provide a copy to the Race Committee. Applications may be obtained from the Race Committee Chair.
- VI. **SCORING:** The low point scoring system as provided in Appendix A of the Racing Rules of Sailing shall be used for all events. For races included in the summer and fall series, scoring shall be in accordance with Appendix A9. For individual events and long distance races, scoring shall be in accordance with Appendix A4.2.
- VII. **BREAKING TIES:** When there is a tie on total points over a series between two or more yachts, the tie shall be broken in accordance with Rule A8 of the Racing Rules of Sailing.
- VIII. **SAIL NUMBERS:** All yachts are to approach the race committee boat prior to the race so that their sail number may be recorded.

IX. STARTING: The starting line shall extend between the white flag on the race committee boat and the designated starting mark. The race committee vessel may use an inner limit or keep away mark at the start. When used, all starting yachts shall pass between the inner limit keep away mark and the other mark when approaching and crossing the line, and shall not touch or pass between the keep away mark and the committee boat. Once the warning signal for a class has been given, all yachts not of that class shall keep clear of the starting area, and an offending yacht may be protested for possible interference.

X. MANDATORY RETIREMENT: Rule 31.2 will not be in effect with regard to the race committee boat. Any yacht touching the race committee boat at or before their start or while finishing must retire. No rounding or alternative penalty will be allowed.

XI. RECALLS: Recalls will be in accordance with the US Sailing Rule 29 except as specified below:

INDIVIDUAL RECALL: One (1) horn blast, plus raising code flag "X", plus hailing sail number of offender(s).

GENERAL RECALL: Two (2) horn blasts, plus raising of code flag "FIRST SUBSTITUTE". When a class is recalled, the race committee may elect to restart that class immediately, or the race committee may restart the recalled class later in the starting order. The restart for that class will be indicated by the raising of the class flag at the sounding of the warning signal. All yachts should monitor the designated race committee radio frequency for information or instructions which the committee in their discretion, may give, and they should pay close attention to the class flags displayed at each warning signal. This modifies Rule 29.2 or the Racing Rules.

XII. ROUNDING THE MARKS: All marks of the course and their respective passing directions will be specified in the race instructions.

XIII. GOVERNMENT MARKS: All government marks listed on the course list for the respective racing circles shall be observed unless they are being used as turning marks for the race being sailed.

XIV. SHORTENING THE COURSE: The course may be shortened at

any turning or rounding mark at the discretion of the race committee.

XV. FINISHING: Yachts must finish from the direction of the last mark, passing between the white flag on the race committee boat (or nearby keep away mark) and the final mark. If the race committee boat is not on station the finishing yacht shall pass within 3 of her boat lengths of the final mark and shall record the time, which shall be reported to the race committee within 24 hours. The race committee boat shall not be required to remain on station after 2100 hours for series races (2200 for "Moonlight Race").

XVI. HEADSAIL: A yacht may use only one headsail at a time, except while changing headsail. EXCEPTION: Bona fide double head rigs may be used while beating and reaching when the main and jib are on the same side. Spinnaker classes may fly a jib with the spinnaker, if desired.

XVII. PROTESTS: A protesting yacht must fly the code flag "B" and must hail the vessel being protested as soon as practical upon claiming a foul. On crossing the finish line, the protesting yacht must notify the Race Committee of the protest and the yacht(s) involved. A protested yacht which has exonerated itself before finishing shall so notify the Race Committee when it finishes. Official protest forms are available at the clubhouse immediately after the race, and must be completed and delivered to the race committee chairman or designated race official within one (1) hour after the race. Any necessary hearing will be scheduled for the following week, or as soon thereafter as practicable.

As an encouragement to competitors to resolve disputes informally, please note that any yacht choosing to retire after finishing will be scored as provided in Appendix A9, but that race score will be eligible to be thrown out when computing the series standings. That race will count toward the minimum number of completed races required for series qualification. The foregoing provisions supercede any applicable contrary provisions of the Racing Rules of Sailing.

A yacht may not protest another for an alleged breach of Racing Rules of Sailing with respect to ISAF Regulation 21.1(b) [requiring all crewmembers to be members of their national governing association]. This changes Rule 60.1(a).

XVIII. DISQUALIFICATION: A race in which a yacht has been officially awarded a DSQ may not be taken as a throw out.

XIX. DNC / DNS / RET / DNF / RAF: A race, in which a yacht has been recorded and scored as DNC, DNS, RET or DNF will not be counted toward series qualification, but may be taken as a throw out, unless a DSQ has been awarded for that race. A race in which the vessel completed the course but retired after finishing (RAF) may also be thrown out, but will be counted toward series qualification.

XX. FINISH AFTER DARK: It is the responsibility of any yacht finishing after dark to clearly identify itself to the race committee upon finishing.

XXI. LIGHTS: All yachts racing at night must have functioning navigational lighting, and shall use the same in accordance with USCG rules.

XXII. RETIREMENT: Any yacht retiring from a race must notify the race committee as soon as practicable upon so doing, either by VHF radio or by haling the committee boat upon leaving the race area.

XXIII. COMMUNICATION WITH THE RACE COMMITTEE: Once the course has been posted and a yacht has checked in, vessels should not ask questions or communicate with the race committee other than as required under these rules. The race committee vessel will monitor and make any announcements by VHF radio on the following channels:

Inner Circle: 68

Outer Circle: 72

For races with one starting area only, all communications will be on channel 68.



XXIV. PRIZES PER CLASS: Prizes per class will be awarded according to two criteria. First, awards for all series, races and classes will be awarded a first, a second and a third place, regardless of the number of boats registered for a particular series or race. Second, to receive a first, second or third place award a boat must *qualify* in accordance with the qualification requirement for that event or series as determined by the Racing Committee. All Racing Committee determinations concerning awards are final.

XXV. CLASSES: Yachts will be assigned to classes according to the PHRF rating provided to the race committee prior to racing. If fewer than 4 yachts registering would be in a class, the class will be dropped and the yachts assigned to another class.

XXVI. CHANGING CLASSES: Any yacht wishing to race in a class other than that to which it has been assigned may change classes only after receipt of permission from the race committee at least 24 hours prior to a race. Prior class finishing positions will not be carried over, but any races sailed will count toward qualification.

XXVII. CREW REQUIREMENTS: No yacht in the Novice class shall compete with less than two (2) persons aboard. No yacht in any class shall compete with less than the number of persons aboard required to assure safe and seamanlike operation of the vessel.

EVENT CALENDARS
SATURDAY LONG DISTANCE EVENTS
12:00 noon start at/near C3 Warwick Neck

June 20 - Rainone Memorial Solo/Twin Race

Aug 22—Fantastic Plastic Pursuit Race

July 11— Newport Storm Race

July 25 - Lady Skippers' Race

August 15—Frank H. Norton Memorial Race

October 17—Pumpkin Patch Race

**2008 SERIES RACING SCHEDULE
SUMMER SERIES**
A yacht shall count the best 9 of 12 races.

<u>DATE</u>		<u>RACE #</u>	<u>FINISH</u>
JUNE	1	1	_____
	8	2	_____
	15	3	_____
	22	4	_____
	29	5	_____
JULY	6	6	_____
	13	7	_____
	20	8	_____
	27	9	_____
AUG.	3	10	_____
	17	11	_____
	24	12	_____

FALL SERIES
A yacht shall count the best 3 of 4 races.

AUG.	31	1	_____	
SEPT.	14	2	_____	
	21	3	_____	
	30	4	_____	Wednesday

MONDAY NIGHT SERIES

CLASSES: All class divisions will be based on PHRF rating except for the Novice class (if such class is designated) which will be based on experience. Each class will be assigned a designated color. The race committee will raise a flag of that color at the giving of the warning signal to indicate the commencement of the starting sequence for the class, and will drop that flag to indicate the start for the class.

QUALIFICATION: Must sail and complete at least 9 of 12 races in the Summer Series and 3 of 4 races in the Fall Series to qualify for series awards.

THROW OUTS: A yacht is allowed the maximum number of throw outs in accordance with qualification standards for that series, but no DSQ finish may be thrown out.

FINISH CURFEW: At least one yacht in each class must finish by 2100 hours to constitute an official race for that class. For the "Moonlight Race", the curfew shall be 2200 hours.

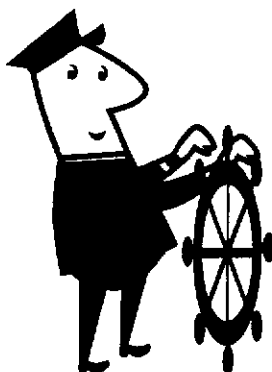
STARTING TIMES: For the classes competing on the inner racing circle, the warning signal for the first class will be given at or about 1815 hours. For classes competing on the outer circle, the warning signal for the first class will be given at or about 1825 hours. The race committee may adjust the time of the first signal in its discretion.

COURSE NUMBER: The course number for each of the classes will be displayed on the starboard side of the race committee vessel prior to the first signal of the starting sequence.

STARTING SEQUENCE: The starting sequence for each class will be in accordance with Rule 26 of the Racing Rules of Sailing 2005 – 2008, as modified by these instructions. Times shall be taken from the visual signals, which are the official signals; the absence of a sound signal shall be disregarded.

<u>Signal</u>	<u>Flag and Sound</u>	<u>Minutes to Starting Signal</u>
WARNING	Class Flag Up; 1 Shotgun Blast	5
PREPARATORY	Prep flag up with any Special Signals; 1 Short Horn Blast	4
ONE MINUTE	Prep flag and Special Signals Down; 1 Long Horn Blast	1
STARTING	Class Flag Down; 1 Shotgun Blast	0 **

**** The warning signal for each succeeding class shall be made with or after the starting signal of the preceding class. The race committee may raise the class flag of the next class at the time of the starting signal, which shall then serve as the warning signal for that class. The restart of any recalled class will be in accordance with Rule XI. of these instructions, as determined by the race committee.**



Courses for Monday Night Races
INNER (BLUE) CIRCLE

#	Start	=====									Finish	Distance
1	A	H(p)	C5(p)	A(p)	H(p)	C5(p)	A(p)	H				4.05
1-S	A	H(p)	C5(p)	A(p)	H(p)	C5(p)	A(p)	H(p)	A(p)	H		5.43
2	A	H(p)	C5(s)	R8(p)	A(p)	H						7.23
3	A	H(p)	C5(s)	R8(p)	RGN(p)	R8(s)	A(p)	H				10.15
4	A	C5(s)	H(s)	A(s)	C5(s)	H(s)	A(s)	C5				3.80
4-S	A	C5(s)	H(s)	A(s)	C5(s)	H(s)	A(s)	C5(s)	A(s)	C5		4.70
5	A	H(p)	C5(s)	C3(p)	A(p)	H(p)	C5(p)	A(p)	H			6.27
6	A	H(p)	C5(s)	C3(p)	A(p)	H						4.59
7	A	R8(p)	RGN(p)	R8(s)	A(p)	H(p)	C5					9.76
8	A	R8(p)	RGN(s)	GR Bell(p)	RGN(p)	R8(s)	A					11.52
9	A	R8(p)	A(p)	C5								6.00
10	A	R8(p)	RGN(p)	R8(s)	A							9.10
11	A	C3(s)	C5(p)	C3(p)	A							6.30
12	H	A(s)	C5(s)	H(s)	A(s)	C5(s)	H(s)	A				4.05
12-S	H	A(s)	C5(s)	H(s)	A(s)	C5(s)	H(s)	A(s)	H(s)	A		5.43
13	H	A(s)	C5(s)	H(s)	A(s)	C5(s)	H(s)	A(s)	C5(s)	H(s)	A	6.15
14	H	A(s)	C3(s)	C5(p)	H(s)	A(s)	C5(s)	H(s)	A			6.27
15	H	A(s)	R8(s)	C5(p)	H(s)	A(s)	C5(s)	H(s)	A			8.91
16	H	C5(p)	A(p)	H(p)	C5(p)	A(p)	H(p)	C5				3.91
17	H	C5(p)	A(p)	H(p)	C5(p)	A(p)	H(p)	C5(p)	A(p)	H(p)	C5	6.08
18	H	C5(s)	C3(p)	A(p)	H(p)	C5(p)	A(p)	H(p)	C5			6.13
19	H	C5(s)	R8(p)	RGN(p)	R8(s)	A(p)	H(p)	C5				10.01

20	C5	A(p)	H(p)	C5(p)	A(p)	H(p)	C5(p)	A				3.80
21	C5	A(s)	C3(s)	C5(s)	A(p)	H(p)	C5(p)	A				5.22
22	C5	A(s)	R8(s)	C5(s)	A(p)	H(p)	C5(p)	A				7.86
23	C5	A(s)	R8(p)	A(p)	C3(p)							8.47
24	C5	A(s)	R8(p)	RGN(p)	R8(s)	C5(s)	A					9.10
25	C5	H(s)	A(s)	C5(s)	H(s)	A(s)	C5(s)	H				3.91
25-S	C5	H(s)	A(s)	C5(s)	H(s)	A(s)	C5(s)	H(s)	C5(s)	H		5.01
26	C5	H(s)	A(s)	C3(s)	H(s)	A(s)	C5(s)	H				6.13
27	C5	H(s)	A(s)	R8(p)	A(p)	C5(s)	H					7.83
28	C5	C1(s)	A(s)	C3(s)	C5(p)	C1						4.42
29	C5	C1(s)	A(s)	R8(s)	C5(p)	C1						7.16
30	C5	C1(s)	C5(s)	C3(s)	C5(p)	C1(s)	C5(p)	C1				5.50
31	C5	C1(s)	C5(s)	C3(s)	C5(s)	C1(s)	C5(s)	C3(s)	C5(s)	C1		7.70
32	C5	C3(p)	C5(p)	C1(p)	C5(s)	C3(p)	C5(p)	C1(p)	C5			7.20
33	C5	R8(p)	RGN(s)	GRBell(p)	RGN(p)	R8(s)	C5					10.40
34	C5	C3(s)	C3(p)	C1Dispair(p)	C3(p)	C5						11.20
35	C3	C5(p)	C1(p)	C5(p)	R8(p)	C5(p)	C1					8.00
36	C3	C5(p)	C1(p)	C5(p)	C3(p)	C5(p)	C1(p)	C5(p)	C3(p)	C5(p)	C1	7.73

** Course # followed by "2X" indicates "Twice Around" entire course. **

Location of referenced marks: *All listed government marks are to be observed unless used as a turning mark.*

A	Special mark or buoy south of Baker's Creek	FLG 2.5 sec	"Round Rock"
H	Special mark or buoy north of Long Point - NNE of N6	RGN	North of Providence Point
C1	Northeast of Chippawanoxet Point	C5	West of Pine Hill Point
C3	Northeast of Sandy Point - West of Warwick Country Club	C3	East of Calf Pasture Point
C5	"Sally Rock"	C1Dispair	Despair Rk NE Hope Island
R8	Southeast of Warwick Light - West of Patience Island	GR Bell	Ohio Ledge

Courses for Monday Night Races
OUTER (GOLD) CIRCLE

#	Start > =====>	Finish	Distance
51	R8 RGN(s) GR Bell(p) RGN(p) R8(s) C3		5.65
52	R8 RGN(p) R8(p) C5(p) R8(p) C3		7.59
53	R8 RGN(p) R8(p) C5(p) R8		6.26
54	R8 C5(p) R8(p) C3		4.68
55	R8 C3(p) C5(p) R8(p) C3		6.50
56	R8 C3(p) R8(s) RGN(p) R8		7.68
57	R8 C5(p) R8(p) C3		6.32
58	R8 C3(p) R8(p) RGN(p) R8(s) C3		6.89
59	R8 FLG 2.5sec (p) R8(p) RGN(p) R8		4.54
60	C3 R8(p) RGN(p) R8(p) C5(p) R8(p) C3		8.92
61	C3 R8(p) RGN(s) GR Bell(p) RGN(p) R8(s) C3		7.98
62	C3 R8(p) C5(p) R8(p) C3		7.66
63	C3 R8(p) C5(p) C3		5.00
64	C3 C5(p) C3(p) A(p) C5		7.47
65	C3 C5(p) C3		5.20
66	C3 C5(s) C3(s) C3		6.64
67	C3 C5(s) C1Despair (p) C5(p) C3		8.34
68	C3 C5(s) C1Despair (p) R8(p) C3		8.72
69	C3 C5(p) R8(p) C3		5.61
70	C3 C3(p) C5(p) R8(p) C3		7.03
71	C3 C5(p) C1(s) C5(s) R8(p) C5(p) C1		8.00
72	C3 C5(p) C1(s) C5(s) C3(s) C5(p) C1(s) C5(s) C3(s) C5(p) C1		8.90

73	C3	C5(p)	C1(s)	C5(s)	C3(s)	C5(p)	C1		5.34
74	C3	A(p)	C5(p)	C3(p)	A(p)	C5(p)	C3(p)	A	8.57
75	C3	A(p)	H(p)	C5(p)	A(p)	H(p)	C5(p)	A	5.31
76	C3	C5(p)	R8(p)	C3					5.00
77	FLG 2.5sec		R8(p)	RGN(p)	R8(s)	C3			5.05
78	FLG 2.5sec		C3(s)	<u>C5(s)</u>	C3				6.14

**** Course # followed by "2X" indicates "Twice Around" entire course. ****

Location of referenced marks: *All listed government marks are to be observed unless used as a turning mark.*

A	Special mark or buoy south of Baker's Creek
H	Special mark or buoy north of Long Point – NNE of N6
C1	Northeast of Chippawanoxet Point
C3	Northeast of Sandy Point – West of Warwick Country Club
C5	"Sally Rock"
R8	Southeast of Warwick Light – West of Patience Island
FLG 2.5 sec	"Round Rock"
RGN	North of Providence Point
<u>C5</u>	West of Pine Hill Point
<u>C3</u>	East of Calf Pasture Point
<u>C1</u> Despair	Despair Island northeast of Hope Island
GR Bell	Ohio Ledge

COURSES FOR LONG DISTANCE REGATTAS

#	Start > =====> Finish	Distance
1.	C3, to Round Rock(s), to <u>C3</u> Calf Pasture(p), to <u>C5</u> Pine Hill(p), to R8 Bell(p), to C3.	7.0 nm
2.	C3, to G7QG(p) SE Quonset Point, to R2 FLR Bell(p) NE Conanicut Point, to R8 Bell(p), to C3.	13.5 nm
3.	C3 to R8 Bell(s), to R2 FLR Bell(s) NE Conanicut Point, to G7QG(s) SE Quonset Point, to <u>C5</u> Pine Hill(p), to R8 Bell(p), to C3.	14.3 nm
4.	C3 Warwick Neck, to RGN(p) S Prudence Island, to G1 FLG 2.5 Sec.(p) NE Homestead Prudence Island, to RGN(p) N Providence Point, to R8 Bell(s), to C3.	16.5 nm
5.	C3, to R8 Bell(p), to RGN(s) N Providence Point, to G1 FLG 2.5 Sec.(s) NE Homestead, to RGN(s) S Prudence Island, to R8 Bell(p), to C3.	16.8 nm
6.	C3, to R8 Bell(p), to RGN(s) N Providence Point, to GR Bell(p) Ohio Ledge, to RGN(p) N Providence Point, to R8 Bell(s), to C3.	8.0 nm
7.	C3, to R8 Bell(p), to G13(s) SE Conanicut Point, to GR Bell(s) Ohio Ledge, to RGN(p) N Providence Point, to R8 Bell(s), to C3.	10.7 nm
8.	C3, to R8 Bell(p), to RGN(s) N Providence Point, to G5 QG Gong(p) W Poppasquash Pt., to GR Bell(p) Ohio Ledge, to RGN(p) N Providence Point, to R8 Bell(s), to C3.	10.9 nm
9.	C3, to R8 Bell(p), to RGN(p) N Providence Point, to R8 Bell(s), to C3.	5.6 nm
10.	C3, to <u>C5</u> Pine Hill(s), to Plum Beach Is. Light(p) [abandoned tower] N Jamestown Bridge, to <u>C5</u> Pine Hill(p), to R8 Bell(p), to C3	18.4 nm

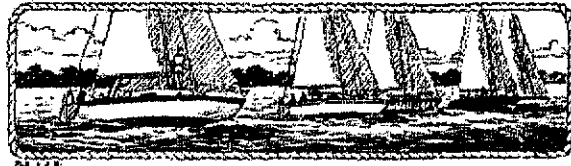
11. C3, to A Mark, to C1 Cheppiwanoxet, to C5, to C3, to A Mark, to C1 Cheppiwanoxet, to C5, to C3. 7.5 nm
12. C3, to Despair C1, to R8 Bell(p), to C3. 8.7 nm
13. C3, to Quonset G7QG, to Pine Hill C5, to C3. 11.4 nm
14. C3, to RGN South Prudence, to Pine Hill C5, to C3. 13.1 nm
15. C3, to R8 Bell, to Quonset G7QG, to C3 11.7 nm
16. R8 Bell, to Plum Beach Jamestown Light, to R8 Bell . 16.0 nm

*** Race Committee may alter pre-set courses or post other courses by listing marks and rounding instructions on committee boat and displaying L flag ("come within hail") with sound signal prior to starting sequence.***

SPECIAL INSTRUCTIONS: Only the following marks must be observed (unless they are used as turning marks):

- | | |
|----------------------------------|---|
| C5: "Sally Rock" | C3: Northeast of Sandy Point – West of Warwick Country Club |
| <u>C3</u> : "Calf Pasture Point" | FLG 2.5 Sec: "Round Rock" |
| | <u>C1</u> : Despair Island (Do Not Sail Between Hope And Despair Islands) |

2008 Summer Racing Series



Spinnaker A

Spinnaker B

Velocity
Thunder
Stormin Norman
Rose of Sharon*
Shanachie*

Profasea
Schedule 80
Parley
Cloud Eight
Challenge*
Full Circle*

*Did not qualify

Class A

Class B

Class C

Mighty Moose
Obadiah
Qing Long
Vela Via
Frequent Flyer*
Cricket*

Swoose
Thora
Magic Carpet
Andiamo
Strange Times

Lagniappe
Serenity Now!
Wizard
Snow Goose
Teddy's Tub Toy
Dexterity*

*Did not qualify

2008 Fall Racing Series

Spinnaker A

Spinnaker B

Sweet Surrender
Thunder
Velocity
Dead Reckoning*
Party of Four*

Parley
Cloud Eight
Stormin Norman
Magic Carpet
Peggy-O

*Did not quality

Class A

Class B

Class C

Coconut
Divided Sky
Shanachie
Cosmo
Frequent Flyer
Vela Via*

Schedule 80
Thora
Loonie
Obadiah
Strange Times

Wahtawah
Wizard
Serenity Now!
Andiamo
Snow Goose

*Did not quality

FRANK H. NORTON
MEMORIAL RACE
August 16, 2008

Spinnaker Class

Parley
Thunder
Warlord
Challenge
Peggy-O

Cruising C

Thora
Cosmo
Cloud Eight
Stormin Norman
Frequent Flyer
Estesea
Obadiah

NEWPORT STORM RACE
July 12, 2008

Spinnaker Class

Thunder
Tay Jay
Rose of Sharon
Warlord
Velocity
Full Circle
Cloud Eight
Challenge*

Cruising Class

Stormin Norman
Serenity Now!
Andiamo
Snow Goose

*Retired

RAINONE MEMORIAL SOLO/TWIN RACE

June 7, 2008

Twin Class A

Schedule 80
Thunder
Rose of Sharon
Estesea

Twin Class B

Profasea
Stormin Norman
Challenge
Obadiah

18TH ANNUAL FANTASTIC PLASTIC RACE

June 21, 2008

Class A

Mighty Moose
Estesea

Class B

Thora
Cloud Eight
Obadiah
Snow Goose

LADY SKIPPERS' RACE

July 26, 2008

Spinnaker Class

Thunder
Velocity
Challenge

*Retired

Cruising Class

Stormin Norman
Estesea
Thora
Cloud Eight*

Pumpkin Patch Race

October 18, 2008

Spinnaker Class

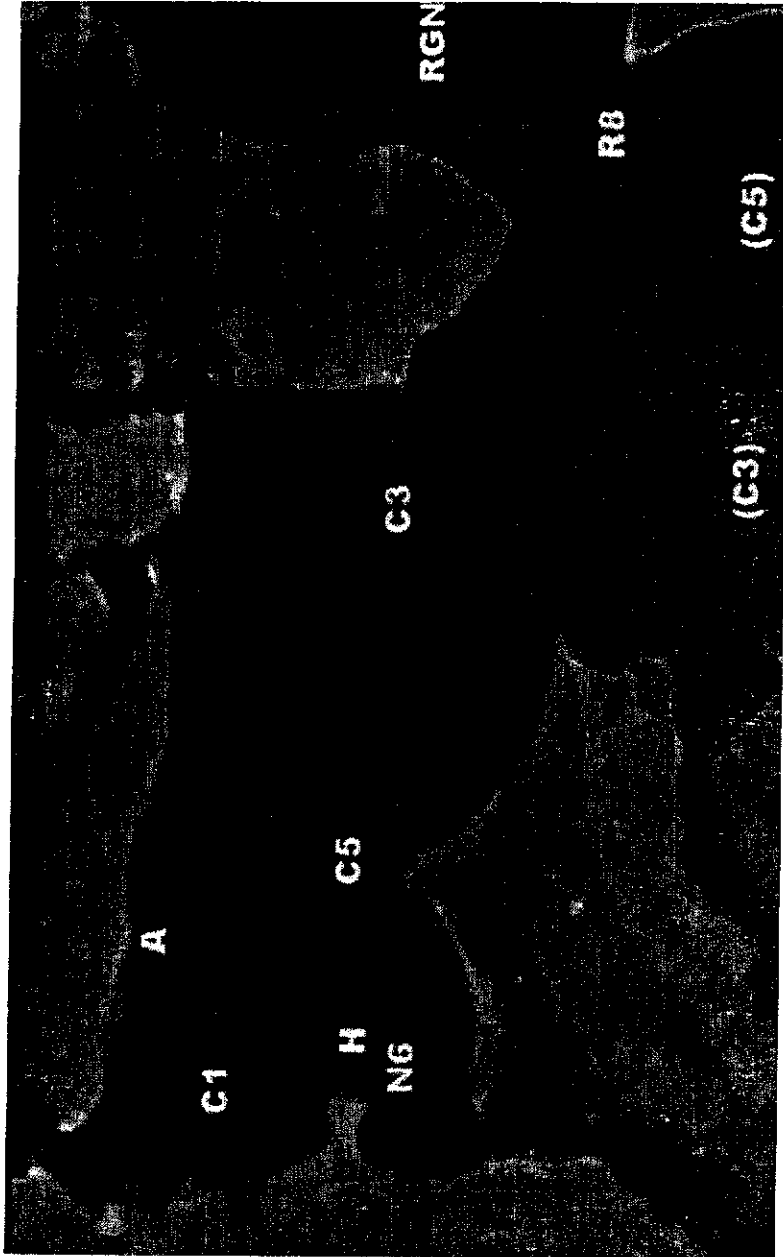
Coconut
Thunder
Velocity

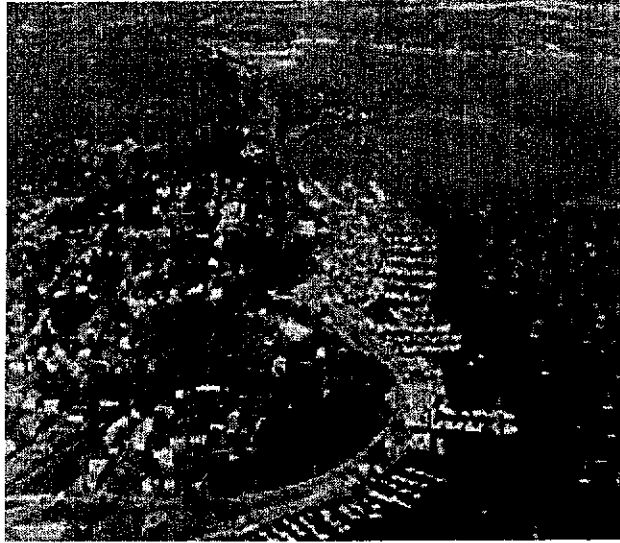
Cruising Class A

Schedule 80
Dark Star
Profasea
Peggy-O
Challenge

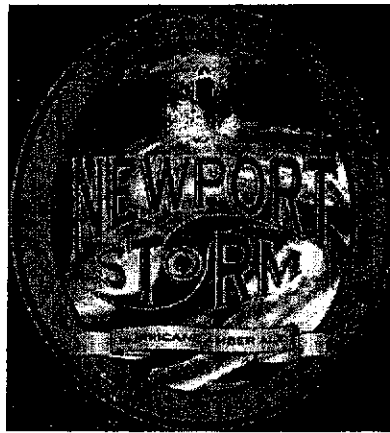
Cruising Class B

Wahtawah
Lagniappe
Serenity Now!
Teddy's Tub Toy
Andiamo
Predesned





Norton's Shipyard and Marina



**COASTAL EXTREME BREWING CO.
IS PROUD TO SUPPORT THE
*West Bay Yacht Club***